

EH90 EH99



SUBARU

Industrial Power Products

Standard Features

- Hardened Valve System
- 20 Amp Charging System
- HotSpark* Electronic Ignition System
- Cast Iron Cylinder Sleeves
- Large Steel Bearing on PTO side
- Large Dual Element Air Cleaner
- Full Pressure Lubrication
- Full Flow Spin-On Oil Filter
- Oil Cooler
- Pulse Type Fuel Pump
- 12V Heavy Duty Electric Starter
- EPA and CARB Tier 3 Emission Standards Certified
- **5 Year Limited Warranty**

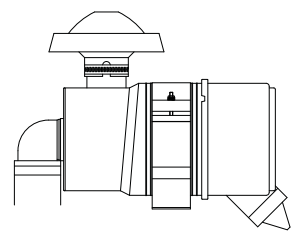
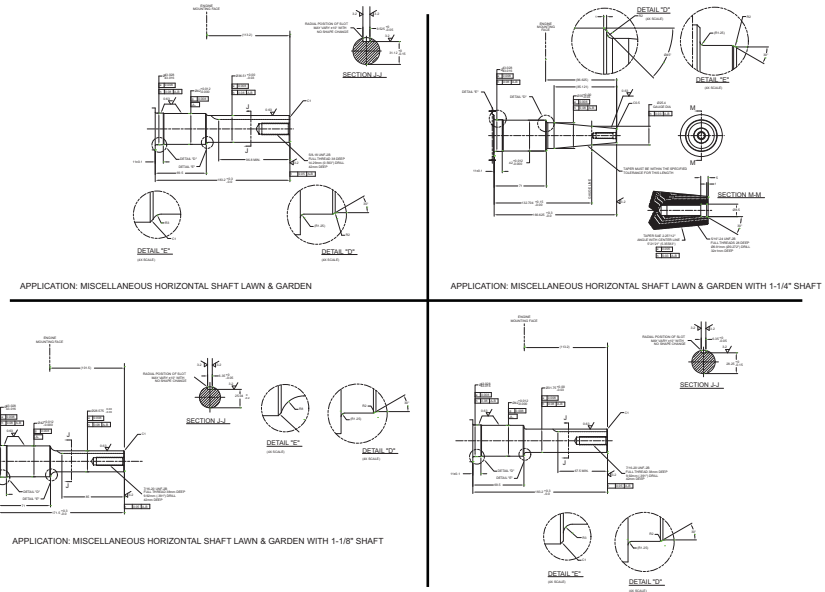
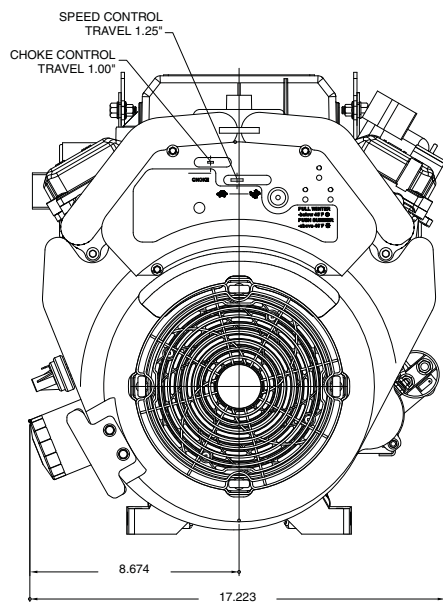
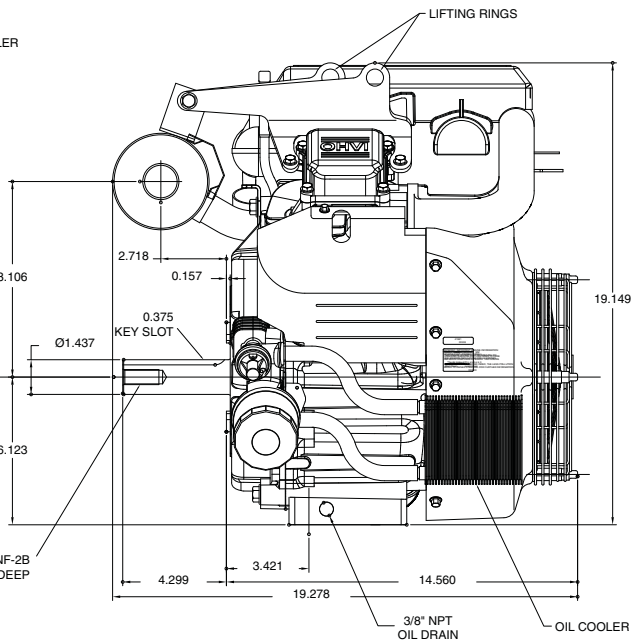
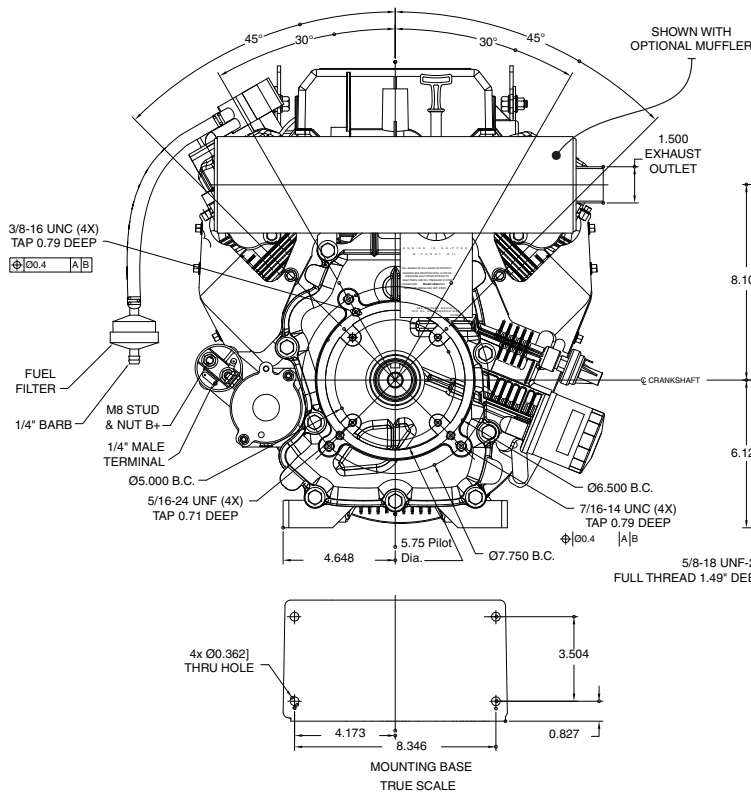
Available Factory Options

- Remote Oil Filter Kit
- Extended Oil Drain Kit
- Muffler Kit
- Large Donaldson® Air Cleaner
- Choice of PTO Shaft
- Flywheel PTO Shaft



Model Name	EH90 / EH99	
Type	Air-Cooled, 4-stroke, V-Twin Cylinder, Horizontal P.T.O. shaft, OHV., Gas Engine	
Bore x Stroke	mm (in)	90 x 78.58 (3.54" x 3.09")
Displacement	999cc (60.96 cu in)	
Rated Output	35hp@3600rpm / 40hp@3600rpm (26.1kw / 29.8kw @3600rpm)	
Direction of Rotation	Counterclockwise as viewed from P.T.O. shaft side	
Starting System	Electric Starter	
Dry Weight	lb	119
Dimension	(L x W x H)	14.56" x 17.22" x 19.15"

Specifications subject to change without notice
Shown with optional muffler



Optional Industrial Air Cleaner adds 9.5" (241mm) to the total height.

